



# BFlex 2 SamplePro

Single Use Specimen Collection System

## Operations & Maintenance Manual



# BFlex 2 SamplePro

## Operations & Maintenance Manual

Effective: 30 April, 2026

Caution: Federal (United States) law restricts this device to sale by or on the order of a physician.

# Contact Information

To obtain additional information regarding your system,  
please contact Verathon Customer Care or visit [verathon.com/service-and-support](https://verathon.com/service-and-support).

## **Verathon Inc.**

20001 North Creek Parkway  
Bothell, WA 98011 U.S.A.  
Tel: +1 800 331 2313 (US and Canada only)  
Tel: +1 425 867 1348  
Fax: +1 425 883 2896  
[verathon.com](https://verathon.com)



## **Verathon Medical (Canada) ULC**

2227 Douglas Road  
Burnaby, BC V5C 5A9  
Canada  
Tel: +1 604 439 3009  
Fax: +1 604 439 3039

Copyright © 2026 by Verathon Inc. All rights reserved. No part of this manual may be copied or transmitted by any method without the express written consent of Verathon Inc.

BFlex, SamplePro, Verathon, and all associated symbols are trademarks or registered trademarks of Verathon Inc. All other brand and product names are trademarks or registered trademarks of their respective owners.

Not all Verathon Inc. products shown or described in this manual are available for commercial sale in all countries.

Information in this manual may change at any time without notice. For the most up-to-date information, see the documentation available at [verathon.com/service-and-support](https://verathon.com/service-and-support).

# Table of Contents

---

- IMPORTANT INFORMATION ..... 1**
  - Product Description ..... 1
  - Statement of Intended Use ..... 1
  - Indications for use ..... 1
  - Contraindications..... 1
  - Statement of Prescription..... 1
  - Intended Users ..... 1
  - Environment of Intended Use ..... 1
  - Notice to All Users ..... 1
  - Cautions ..... 2
  
- INTRODUCTION..... 3**
  - SamplePro..... 3
  - System Parts & Accessories ..... 4
  
- SYSTEM FEATURES ..... 5**
  - SamplePro..... 5
  
- SETTING UP..... 6**
  - Procedure 1. Perform Initial Inspection..... 6*
  - Procedure 2. Attach the SamplePro Bridge..... 7*
  
- USING THE DEVICE ..... 8**
  - Procedure 1. Prepare the System..... 8*
  - Procedure 2. Collect a Sample ..... 8*
  
- MAINTENANCE & SAFETY ..... 11**
  - Periodic Inspections ..... 11
  - Device Disposal..... 11
  
- PRODUCT SPECIFICATIONS ..... 12**
  - Component Specifications ..... 12



# Important Information

---

## Product Description

SamplePro is a two-part, sterile, single-use system. It features a bridge that securely connects to the BFlex 2 suction port and a self-sealing specimen container that attaches to the top of the bridge. Upon removal of the container, one-way valves protect the collected sample from spills and leaks. Each SamplePro kit contains one bridge and two 50 mL containers.

## Statement of Intended Use

The BFlex 2 SamplePro system is intended for use with compatible BFlex 2 bronchoscopes for collection of fluid samples from the bronchial or alveolar part of the lung.

## Indications for Use

The BFlex 2 SamplePro system is for use in medical procedures where the collection of fluid samples from the bronchial and/or alveolar parts of the lung is clinically indicated.

## Contraindications

There are no known contraindications for the BFlex 2 SamplePro system.

## Statement of Prescription

Caution: Federal (United States) law restricts this device to sale by or on the order of a physician.

## Intended Users

The BFlex 2 SamplePro system is for use only by trained and qualified health care professionals.

## Environment of Intended Use

The BFlex 2 SamplePro system is intended to be used in professional healthcare environments and institutions.

## Notice to All Users

Verathon recommends that all users do the following:

- Read the manual before using the equipment.
- Obtain instruction from a qualified individual.

# Cautions

*Cautions indicate that use or misuse of the device may cause a problem, such as a malfunction, failure, or damage to the product*

## Cautions: Use



### CAUTION

Do not use the SamplePro if its packaging is damaged.



### CAUTION

Do not use a knife or other sharp instrument to open the packaging containing the SamplePro.



### CAUTION

Use only compatible BFlex 2 bronchoscopes. The SamplePro bridge will not lock onto incompatible bronchoscopes.



### CAUTION

Do not unscrew the SamplePro container lid prior to collecting a sample.



### CAUTION

The SamplePro is not compatible with pneumatic tubing systems. Use in pneumatic tubing systems may cause sample leakage.

# Introduction

---

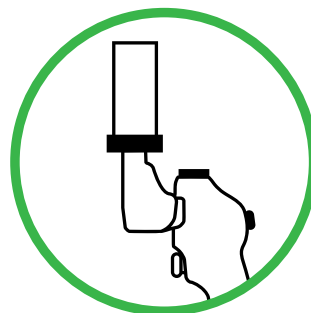
## SamplePro

The SamplePro system is compatible with suction capable BFlex 2 Single-Use Bronchoscopes, which this manual refers to as *scopes*. These scopes can be identified by an alignment tab and locking groove on the suction port, and by a compatibility symbol on both the scope and SamplePro label.

Figure 1. Visual Indicators



Figure 2. Compatibility Symbol



This manual details how to use SamplePro and provides limited information on how to use scopes. For more information, please refer to the following manual, or contact Verathon Customer Care:

- *BFlex 2 Single-Use Bronchoscopes Operations & Maintenance Manual for Core* (part number 0900-5209)

Current editions of manuals are available at [verathon.com/service-and-support](https://www.verathon.com/service-and-support).

# System Parts & Accessories

Table 1. Required System Components

REQUIRED PARTS & ACCESSORIES	
<p>SamplePro Bridge</p> 	<p>SamplePro Container</p> 
<p>One of the following scopes:</p>	
<p>BFlex 2 Slim 3.8 Single-Use bronchoscope</p> 	
<p>BFlex 2 Regular 5.0 Single-Use bronchoscope</p> 	
<p>BFlex 2 Large 5.8 Single-Use bronchoscope</p> 	

# System Features

## SamplePro

Figure 3. SamplePro Bridge

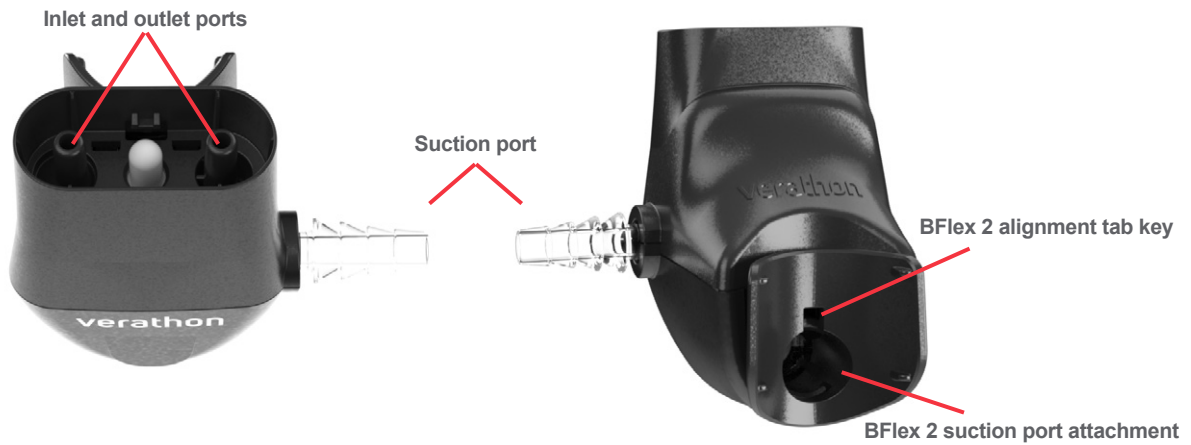
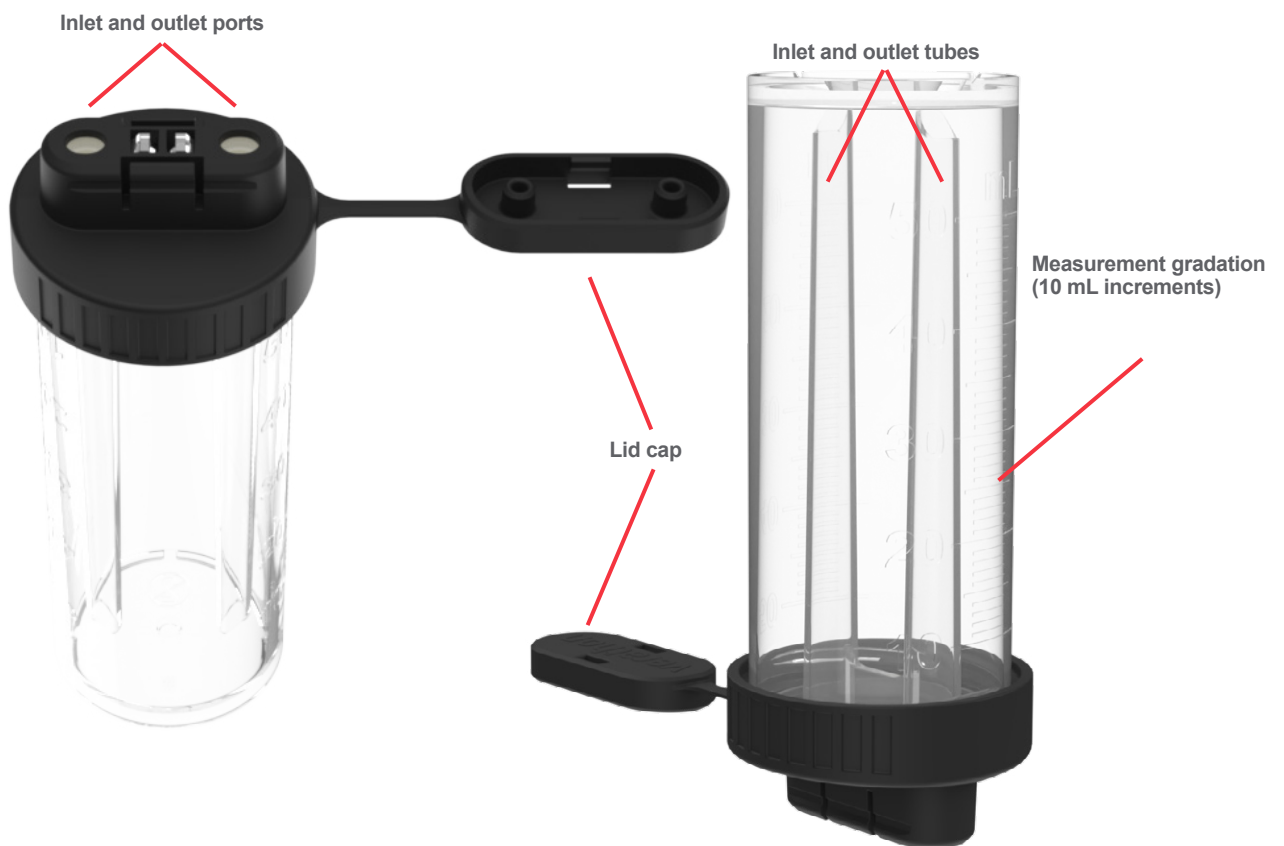


Figure 4. SamplePro Container



# Setting Up

---



Please read the [Cautions](#) section before performing the following tasks.

Before you can use the system, you must inspect the components and set up the system. Complete the following procedures:

1. **Perform Initial Inspection**—Inspect the system for any obvious physical damage that may have occurred during shipment.
2. **Attach the SamplePro Bridge**—You can use the BFlex 2 bronchoscope as normal while the SamplePro bridge is attached and in bypass mode.

## **BYPASS MODE**

When the SamplePro Bridge is connected to a BFlex 2 bronchoscope without a container, it operates in bypass mode. In this mode, pressing the BFlex 2 suction button allows liquid to flow through the suction tubing without being collected.

## **COLLECTION MODE**

When a SamplePro container is connected, the system automatically switches to collection mode. Pressing the suction button collects fluid into the container. Removing the container returns the system to bypass mode.

---

## **Procedure 1. Perform Initial Inspection**

---

When you open the SamplePro pouch, perform a visual inspection for any obvious physical damage that may have occurred during shipment or storage.

1. Verify that you have received the appropriate components.
2. Inspect the components for damage.
3. If any of the components are missing or damaged, notify Verathon Customer Care or your local representative. For contact information, visit [verathon.com/service-and-support](http://verathon.com/service-and-support).

---

## Procedure 2. Attach the SamplePro Bridge

---

1. Align the bridge's suction port attachment with the BFlex 2 suction port. Ensure the Verathon logo on the bridge is in the correct orientation.



2. Apply pressure to the front of the bridge, pressing it firmly to the BFlex 2 handle. An audible click is heard when the connection is complete.

*Note: Pressing against the flat area helps ensure pressure is applied in the correct direction.*



3. Connect a suction line to the SamplePro bridge suction port.

*Note: The inside diameter of the suction tubing should be between 6.0 and 7.0 mm, inclusively.*



# Using the Device



Please read the [Cautions](#) section before performing the following tasks.

---

## Procedure 1. Prepare the System

---

1. Connect your monitor and cable to the BFlex 2 bronchoscope. For information on setting up your monitor, see its manual. Current editions of manuals are available at [verathon.com/service-and-support](http://verathon.com/service-and-support).
2. If the bridge is not yet connected, complete the procedure [Attach the SamplePro Bridge](#) on page 7.

---

## Procedure 2. Collect a Sample

---

### COLLECT A SAMPLE

1. Attach the container by firmly pressing it into the port on top of the bridge until it is firmly seated. The container is fully seated when there is no visible gap between the bridge and the container. Releasing pressure too soon will cause the container to eject from the bridge.

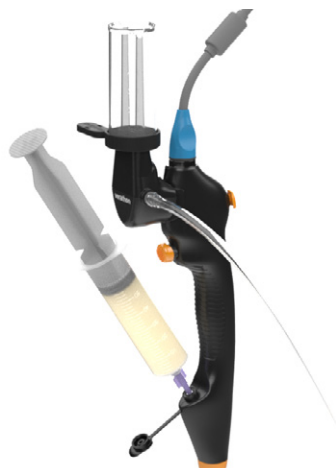


- When at the desired location to collect a sample, use a compatible syringe inserted into the BFlex 2 accessory port to flush saline through the bronchoscope.

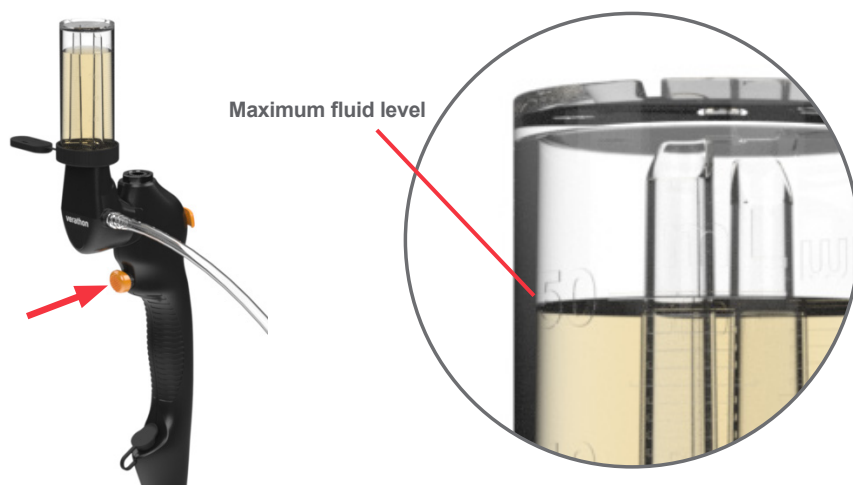
Do not press the suction button while introducing liquid. This can cause the liquid to be removed from the bronchoscope. For information on administering liquid with the BFlex 2, refer to the following manual, or contact Verathon Customer Care:

- BFlex 2 Single-Use Bronchoscopes Operations & Maintenance Manual for Core monitors* (part number 0900-5209)

Current editions of manuals are available at [verathon.com/service-and-support](http://verathon.com/service-and-support).



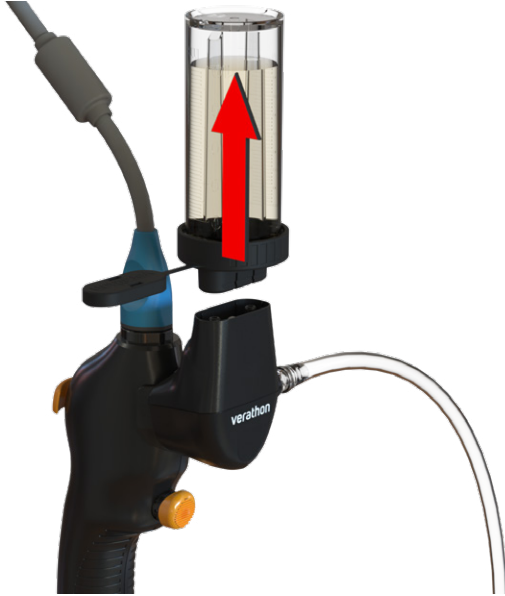
- Ensure the syringe and any other accessories have been removed from the accessory port, and then replace the cap on the accessory port to restore the full seal.
- Press the BFlex 2 suction button. The container starts filling. Make sure the sample does not exceed the maximum fluid level marking (50 mL) on the container. Release the button to stop suction.



## REMOVE THE SAMPLE

- When the sample collection is complete, pull the container vertically from the bridge making sure to keep the container aligned with the bridge during removal. One-way valves in the container seal automatically to retain the sample.

*Note: Do not attempt to unscrew the container.*



- Close the container cap.



## COLLECT ADDITIONAL SAMPLES (OPTIONAL)

- If additional samples are clinically indicated, using the additional container provided, repeat Step 1 through Step 6. With the container removed, the bridge reverts to Bypass Mode if further suctioning is needed.

## SINGLE-USE COMPONENT DISPOSAL

- When the procedure is complete, dispose of the SamplePro bridge and bronchoscope according to your local protocols for bio-hazard waste. Unused containers should also be disposed of and not be retained for later use.

# Maintenance & Safety

---

## Periodic Inspections

No periodic inspections, maintenance, or calibrations are required by Verathon.

Report any suspected defects to Verathon Customer Care or your local representative. For contact information, visit [verathon.com/service-and-support](https://www.verathon.com/service-and-support).

## Device Disposal

When a procedure is complete, dispose of all single-use items according to your local protocols for bio-hazard waste.

# Product Specifications

---

## Component Specifications

### SamplePro Specifications

Table 2. SamplePro (0574-0263)

GENERAL SPECIFICATIONS			
Container volume	50 mL		
OPERATING & STORAGE SPECIFICATIONS			
	Operating Conditions	Shipping Conditions	Storage Conditions
Temperature:	10–40°C (50 to 104°F)	-20–45°C (-4 to 113°F)	18–28°C (64 to 82°F)
Relative humidity:	10–95%	10–95%	40–60%
Atmospheric pressure:	700–1060 hPa	440–1060 hPa	1013 hPa

# Glossary

---

The following table provides definitions for specialized terms used in this manual or on the product itself. For a full list of caution, warning, and informational symbols used on this and other Verathon products, please refer to the *Verathon Symbol Glossary* at [verathon.com/service-and-support/symbols](http://verathon.com/service-and-support/symbols).

TERM	DEFINITION
C	Celsius
F	Fahrenheit
hPa	Hectopascal
in	Inch
mm	Millimeter
mL	Milliliter
WEEE	Waste electrical and electronic equipment





**verathon**